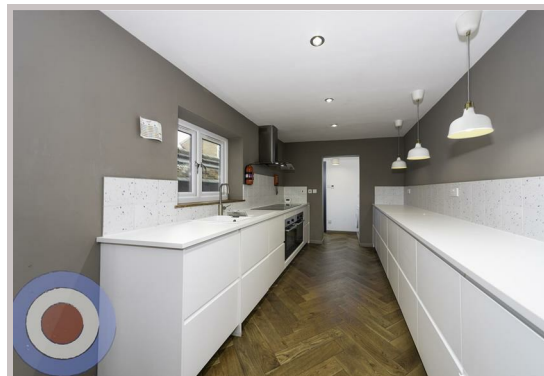




5 Ruskin Avenue
Manchester
M14 4DP



5 Ruskin Avenue

£650 Per month

STUDENT PROPERTY AVAILABLE ON 01/07/26

This stylish 6-bedroom, 3-storey house is perfectly located in Whitworth Park, just a short walk from the university. Packed with original features and individually styled bedrooms, all six bedrooms are generous doubles, ideal for student living.

The open-plan kitchen-diner provides a social hub, while the epic bathroom features a pink cast iron bathtub, concrete sink, and reclaimed timber cladding – a unique and stylish space.

No deposit required and communal cleaning included throughout your tenancy.

£150 pppw
£650 pppcm
£170 pppw WITH BILLS INCLUDED

- NO DEPOSIT
- ALL BILLS INCLUDED
- COMMUNAL CLEANING INCLUDED
- ALL DOUBLE BEDROOMS
- ENERGY EFFICIENT HOUSE C OR ABOVE
- OPEN PLAN KITCHEN DINER

Local Authority
Manchester

Council Tax Band Exempt

EPC Rating C

Contact

01613992619

hello@welcometomanchesterlettings.com

www.welcometomanchesterlettings.com

